

#LOVIbook2021



*Join us!*

**facebook**

[facebook.com/lovpolska](https://facebook.com/lovpolska)



“Breastfeeding is the greatest gift you can give to your baby. It is the perfect state which the baby instinctively seeks from the moment of birth. That is why LOVI wants to protect lactation and the natural suckling reflex.”









# Take advantage of professional breastfeeding support

In cooperation with prominent specialists in the field of lactation, neonatologists and speech and language therapists, LOVI brand creates innovative products, providing the necessary assistance to breastfeeding mothers, along with products for alternative feeding and soothing (bottles and teats for serving expressed milk, and soothers), safe for the child's suckling reflex.

This safety is confirmed by the results of the LOVI teat and bottle tests, conducted under clinical conditions, involving large groups of infants, as well as by recommendations from medical practitioners and numerous awards granted for LOVI bottles.

We are trusted by experts, so you can trust us as well.

*Visit:*

[www.lovibaby.com](http://www.lovibaby.com)

Learn about our unique programme:  
“Breastfeeding Course”.





**#TestedInnovations**

## Trust the experts

LOVI brand in collaboration with leading lactation and neonatal specialists, as well as speech and language therapists, conducts the research and educational programme known as Tested Innovations.

In order to support breastfeeding and the active development of a child from its first days of life, we develop, in conjunction with medical experts, feeding and soothing products that meet the most stringent safety standards.

LOVI accessories are designed based on the latest medical knowledge and innovative technologies.

They are subjected to:

- ✓ clinical trials (bottles, teats and soothers),
- ✓ trials conducted by hospital personnel , with the participation of breastfeeding mothers (breast pumps).

Clinical trials, managed by medical practitioners and midwives, and involving the parents, are carried out in hospitals and specialist clinics. The trials are conducted using a large number of infants to provide statistically meaningful and credible results. Only then are the products placed on the market.



**Brand recommended by midwives\***


\* Based on a survey conducted in 2017 in Poland on a group of 213 midwives.

Check research  
results

[www.lovibaby.com](http://www.lovibaby.com)

See page. 79



A close-up photograph of a woman with long dark hair breastfeeding her baby. The baby is wearing a floral-patterned onesie and is looking towards the camera. The woman is wearing a light-colored, textured top. The background is softly blurred, showing a light blue pillow and a patterned blanket.

LOVI Dynamic Teat® expands  
with the baby's sucking rhythm  
– imitating mother's breast.



# Unique achievements of LOVI in promoting healthy suckling



## A unique, dynamic structure of the soother

The nipple is made of heterogeneous silicone. It does not impede proper speech or orthodontic development, enables easy breathing and swallowing of saliva, and prevents biting of the soother's nipple. The teat does not impede the suckling reflex in neonates and infants.\*


## The unique technology of heterogeneous silicone feeding teat layers

A thick layer of silicone as a base and a thin layer at the tip of the LOVI Dynamic Teat®: the thin tip of the teat expands, actively stimulating the baby's oral muscles to exert effort; its harder base provides a wider, more stable support for the lips and prevents biting of the teat. With this technology the teat is more compatible with breastfeeding and does not impede the suckling reflex.\*\*

\*) When used in accordance with the manufacturer's recommendations provided in the product information leaflet.

\*\*) Confirmed through a product usability survey conducted under clinical conditions in 2007 in Poland, using a specialized questionnaire, on a group of 607 infants, involving medical practitioners, midwives and parents."



A close-up photograph of a woman with long brown hair breastfeeding her baby. The woman is wearing a grey t-shirt. The baby is wearing a light pink long-sleeved shirt and teal ribbed pants. The baby is looking towards the camera. The woman's hands are visible, holding the baby. The background is dark with a white pattern.

Breastfeeding is the best gift that  
you can give to your baby on their  
birth day.





# Protection of breastfeeding

Breastfeeding is the healthiest and most valuable feeding method for newborns and infants. Although most mums want to breastfeed their babies, to begin may prove challenging.

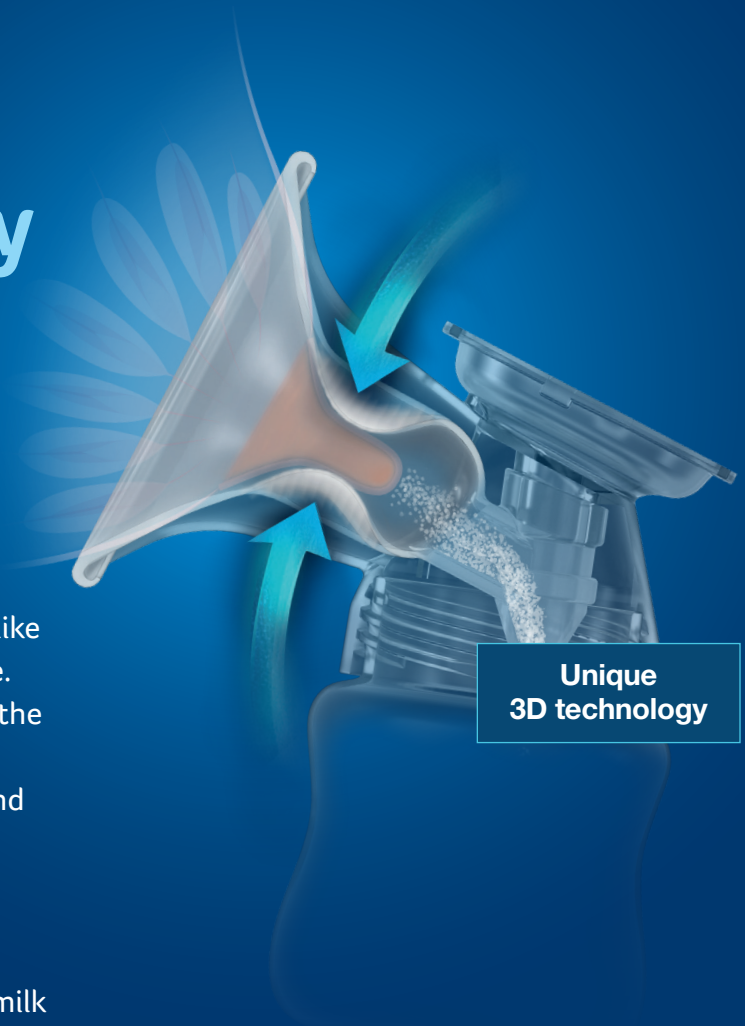
That is why it is so important that your effort ends with success. To help you overcome lactation problems and to protect lactation, **we create products dedicated to natural feeding. These will help you overcome difficulties, while ensuring breastfeeding comfort.**

Thanks to this, those moments spent with the baby attached to your breast will be sheer pleasure.

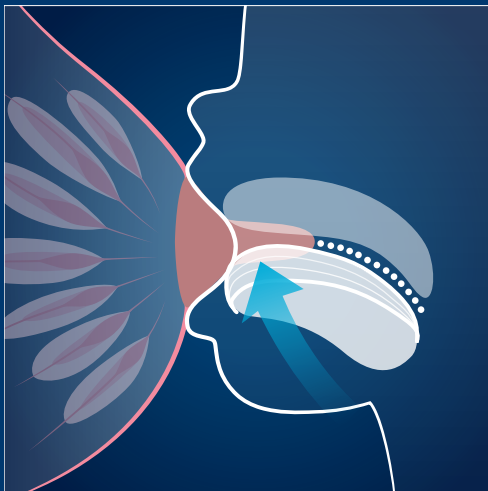
# Revolutionary 3D funnel - closest to nature

3D funnel is a revolutionary solution - unlike conventional funnels it presses the nipple. The funnel surrounds and evenly presses the nipple, working in multiple dimensions at the same time, just like a baby's mouth and tongue do.

The even and gentle pressure stimulates prolactin's secretion - the hormone responsible for milk production, causing milk to flow out quickly and naturally, without discomfort.

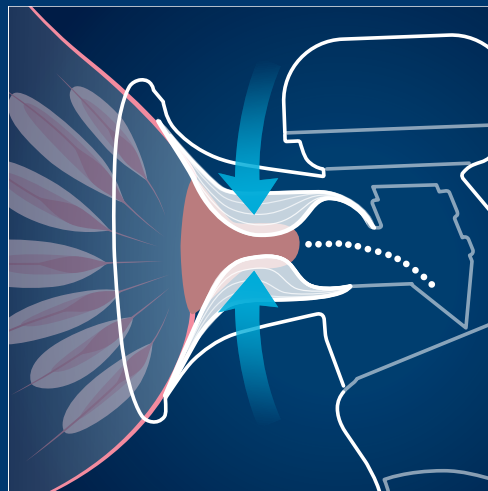


Unique  
3D technology



## **Baby:**

1. surrounds the nipple with its mouth;
2. presses it;
3. vacuum that is created in the mouth causes the milk to flow out.



## **3D funnel:**

1. surrounds the nipple;
2. gently presses the nipple;
3. vacuum that is created causes the milk to flow out into the bottle.







# Expert in solving lactation problems

cat. no. 50/070exp

## LOVI breast pump

Expert 3D<sup>PRO</sup>



### Expert in solving lactation problems

Your solution for:

- nipple pain
- breast fullness
- milk stasis
- mastitis

Quickly stimulates milk production after C-section

Perfect for mothers who try to prepare for motherhood as best as possible. However, there are situations that can't be foreseen, such as whether she will give birth naturally or by C-section, whether she will be able to breastfeed at the beginning or will there be feeding problems.

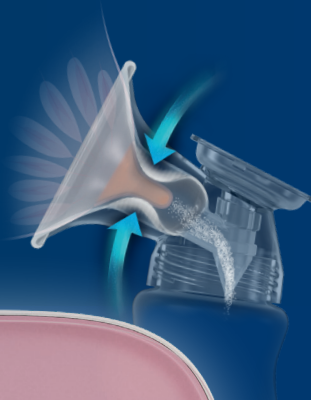
Expert 3D PRO breast pump is extremely effective in difficult times.

#### Set includes:

- ✓ Silicone 3D funnel
- ✓ 3D funnel holder
- ✓ Breast pump body
- ✓ LOVI Medical+ Bottle 150 ml with LOVI Dynamic miniTeat 0m+, sealing disk, screw ring and feeding cup
- ✓ Plug
- ✓ USB cable
- ✓ Tube
- ✓ Adapter, bottle stand
- ✓ LOVI Discreet Elegance Breast Pads (samples)
- ✓ Breast pump bag

REMEMBER: LOVI brand recommends breastfeeding as the healthiest feeding method. It recommends to start using an alternative feeding method only after consulting your medical practitioner, midwife or pharmacist, when breastfeeding is impossible or insufficient.

Revolutionary 3D funnel  
- closest to nature



#### Extremely effective

openwork 3D funnel holder for greater control of the pressure applied on the nipple



#### Comfortable pumping

semi-reclined position, comfortable after a C-section





The breast pump has helped  
to solve lactation problems of

75% of MUMS.\*

It is used in maternity wards in  
Poland and has been positively  
evaluated by mums.\*

\* A product usability survey of the LOVI Expert Breast Pump conducted under clinical conditions by midwives and lactation consultants in 2017 and 2018 in Poland on a group of 60 women, on the commission of LOVI (Canpol).



**Extremely quiet\***

discreet pumping in all conditions

\*the quietest of LOVI breast pumps



3 sessions

**Mobile**

can be charged via USB  
and built-in rechargeable  
battery provides 3 pumping  
sessions on a single charge



**Easy to wash**

small number of  
parts



**Two-phases**

expresses milk in two phases  
- stimulation imitates the baby's quick  
movements to stimulate milk flow  
- deep pumping reflects efficient milk  
intake



**Adjusting level of power to  
mother's needs**

9 power levels in stimulation phase  
9 in the pumping phase



**Convenient bag**

perfect for storing  
and carrying the  
breast pump

*Spare elements available*

cat. no. 50/036



# Your friend in breastfeeding

cat. no. 50/050

LOVI breast pump

Prolactis 3D<sup>SOFT</sup>



## Everyday effective support in care of the mum's best comfort.

It's perfect for mothers who are looking for a breast pump that will allow them to gently and efficiently express their milk so they don't have to give up their plans.

### Set includes:

- ✓ Silicone 3D funnel
- ✓ 3D funnel holder
- ✓ Breast pump body
- ✓ LOVI Medical+ Bottle 150 ml with LOVI Dynamic miniTeat 0m+ ,sealing disk, screw ring and feeding cup
- ✓ Plug
- ✓ USB cable
- ✓ Tube
- ✓ Adapter, bottle stand
- ✓ LOVI Discreet Elegance Breast Pads (samples)
- ✓ Breast pump bag/backpack

REMEMBER: LOVI brand recommends breastfeeding as the healthiest feeding method. It recommends to start using an alternative feeding method only after consulting your medical practitioner, midwife or pharmacist, when breastfeeding is impossible or insufficient.

## Revolutionary 3D funnel - closest to nature



### Quick

the breast pump can express up to 100 ml of milk in 10 minutes



### Gentle

soft silicone 3D funnel adapts to your breast and, by surrounding the nipple from all sides, positions the nipple correctly





#### Quiet

discreet pumping in all conditions



3 sessions

#### Mobile

can be charged via USB and built-in rechargeable battery provides 3 pumping sessions on a single charge



#### Easy to wash

small number of parts



#### Two-phases

expresses milk in two phases  
- stimulation imitates the baby's quick movements to stimulate milk flow  
- deep pumping reflects efficient milk intake



#### Adjusting level of power to mother's needs

9 power levels in stimulation phase 9 in the pumping phase



#### Convenient bag/backpack

perfect for storing and carrying the breast pump

*Spare elements available*

cat. no. 50/037



# Comprehensive protection of lactation

cat. no. 50/030exp

## Manual Breast Pump Expert



### Comprehensive protection of lactation

The breast pump is gentle and effective, thanks to a silicone funnel and the 3D technology used for expressing (3D funnel not only suckles but also presses the nipple, just like a baby's mouth and tongue do). Together with other accessories in the kit, it offers a comprehensive solution for the mother and child, protection of lactation and support of breastfeeding.

#### Set includes:

- ✓ breast pump with adapter and 150ml Medical+ Bottle
- ✓ accessories for feeding and storage kit (MINI teat, twist top, sealing disc)
- ✓ feeding cup with a scale
- ✓ bottle stand
- ✓ storage bag
- ✓ spare parts
- ✓ 6 Discreet Elegance breast pads - various colours



Light



Venting valve



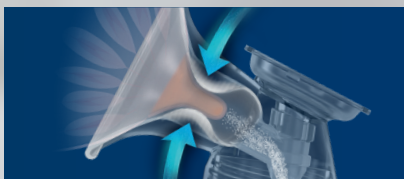
Convenient storing bag

*Spare elements available*

cat. no. 50/035

REMEMBER: LOVI brand recommends breastfeeding as the healthiest feeding method. It recommends to start using an alternative feeding method only after consulting your medical practitioner, midwife or pharmacist, when breastfeeding is impossible or insufficient.





#### **3D funnel - closest to nature**

Unlike conventional funnels, it not only suckles but also presses the nipple, just like a baby's mouth and tongue do, causing milk to flow.



#### **Convenient handle**

It has an easy grip, which ensures effective milk expression.



#### **Numerous benefits in one set**

The set provides comprehensive protection of lactation: from milk expression, feeding the child, to milk storage.



# Exclusive protection during day and night

Disposable Breast Pads Discreet Elegance

- cat. no.
- 40 pcs - 19/602
  - 60 pcs - 19/607
  - 20 pcs - 19/610
  - 20 pcs - 19/611



Medical Device



## Exclusive protection during day and night

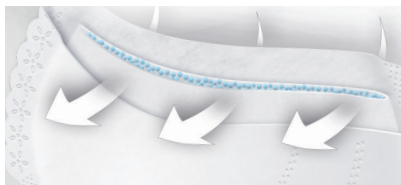
Super absorbent and extremely thin Discreet Elegance pads guarantee dryness both during the day and night. They are conveniently shaped

and finished with an elegant-looking lace, ensuring ultimate comfort and hygiene.



### Super absorbent

Gelling filling retains moisture up to 100 ml.



### Breathable

They are air permeable, protecting the sensitive breast skin against scalding.



### Wrapped individually

Convenience, each pad wrapped individually.

# Soft like mother's touch

## LOVI Nipple Shields Skin Touch

cat. no.  
size S – 5/605gb  
size M/L – 5/606gb

2 pcs in a capsule



### Protection of breast nipples

Helpful with concave or flat nipples, they imitate a breast nipple. They can be used after consulting your lactation professional, in cases of hypersensitivity of or damage to the nipples. Available in two sizes: S (small) and M/L (standard).



#### Extremely thin

Which enables for even easier milk suckling by a child. Thin and soft tip reduces the distance to the nipple.



#### Matt surface

Imitates mother's skin, its texture and delicacy, and high-quality silicone does not change the taste and smell of milk, which gives the child a feeling of naturalness.



#### Profiled shape

Enables the baby to maintain direct contact with its mother's breast. Nipple Shields adhere very well to the body thanks to which suckling of breast milk is easier for a child.

# Convenient and safe

## Breast Milk Storage Bags

cat. no.

25 pcs - 12/208



**It is an excellent protection of what is most valuable - mother's milk**

Breast Milk Storage Bags are a safe and hygienic way to preserve your milk for longer.



### Notes

space to write pack date and amount of liquid.



### Scale

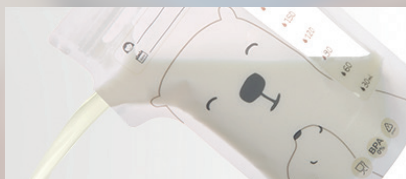
readable, visible scale, capacity up to 200 ml.



### Storing

suitable for storing in the fridge or in the freezer.

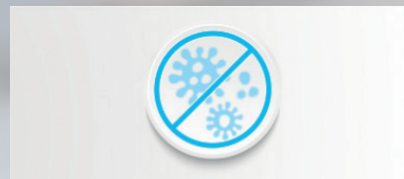


**Profiled nozzle**

convenient and easy milk pouring from storage bag to bottle.

**Tight closure**

double closure of the bag prevents accidental spilling of milk.

**Sterile bag**

ready to use right away.









# Combining breastfeeding with bottle feeding

If you are experiencing periodic breastfeeding difficulties, want to leave your child in the care of another person or if your paediatrician recommends that your baby needs extra feeding for medical reasons, our accessories enable you to feed milk in a way that does not impede your baby's suckling reflex or discourage it from breast suckling. This means you can return to breastfeeding without any problems.



# Safe for breastfeeding


LOVI Dynamic Teat®



cat. no.

**SUPER** 0 m+  - 18/749

**SUPER** 3 m+  - 18/750

**SUPER** 6 m+  - 18/751

**SUPER** 9 m+  - 18/752

6 m+  - 18/753

3 m+  - 18/754

2 pcs in a container

## OPINION OF A SPEECH AND LANGUAGE THERAPIST

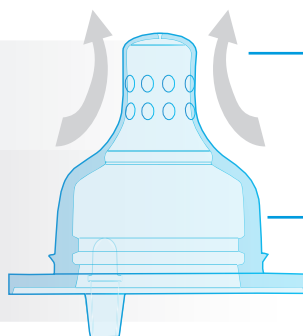


The teat should be constructed in a dynamic fashion and function actively in the mouth of the baby in a manner mimicking breast suckling, while stimulating the infant to actively exert effort. This fosters the correct development of the articulatory apparatus muscles and in the future will provide the basis for the child's proper speech development."

Aleksandra Lada M.D., PhD,  
Speech and Language Therapist

**dynamic teat tip -**  
thinner silicone

**wide base -**  
thicker silicone



### Speech development

The soft and dynamic tip expands and contracts with the baby's suckling rhythm, enabling active speech muscle training.

### Development of bite and proper breathing

The hard and profiled base lets the baby's lips remain tightly attached to the teat – it supports breathing through the nose and prevents biting of the teat base.

### Teat made of heterogeneous silicone layers

LOVI Dynamic Teat® for feeding with the mother's expressed milk, designed in conjunction with speech and language therapists. It was created with the use of heterogeneous layer technology: it has a soft, thin, expanding tip and a hard, wide and profiled base. Thus, it does not interfere with breastfeeding. Clinically tested in Poland. It features an effective **SUPER vent** air release system preventing it from getting drawn in and collapsing.

\*The flow structure does not require additional air-release.

REMEMBER: LOVI brand recommends breastfeeding as the healthiest method of feeding. It recommends to start using an alternative feeding method only after consulting your medical practitioner, midwife or pharmacist, when breastfeeding is impossible or insufficient.

89% of MEDICAL  
PRACTITIONERS

did not observe any difficulties  
in combining breastfeeding with bottle  
feeding using LOVI bottle.\*

\* a product usability survey conducted under clinical  
conditions in 2007 in Poland, using a specialised  
questionnaire, on a group of 607 infants aged 0-12 months



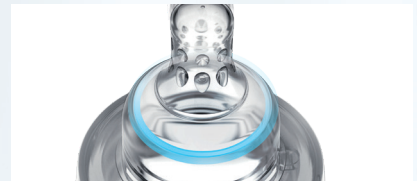
#### Dynamic tip of the teat

Made of a thin layer of silicone. Actively works to stimulate the muscles of the mouth so they are active. The baby has to work for food.



#### Venting system **SUPER vent**

It reduces the risk of colic. The venting valve prevents the teat from getting drawn in and collapsing, thus reducing the risk of colic.



#### Hard, wide, profiled base

Made of a thicker layer of silicone. It provides a stable support for the lips. The profile and width of the base, selected by medical experts, ensures the baby opens its lips to the right position.



# Protection of the suckling reflex

Medical+ Bottle with Dynamic Teat®

cat. no.

0 m+ teat  
150 ml – 21/564

3 m+ teat  
250 ml – 21/562

9 m+ teat  
330 ml – 21/560



## RESULTS OF A CLINICAL TRIAL OF THE LOVI BOTTLE\*



A sample survey conducted among medical practitioners, nurses, midwives and parents has confirmed that using the LOVI feeding bottle is safe for breastfeeding, letting the baby preserve their suckling rhythm, the correct coordination of suckling, swallowing and breathing, the active use of lips and tongue muscles, and suckling efficiency.

\*a product usability survey conducted under clinical conditions in 2007 in Poland, using a specialised questionnaire, on a group of 607 infants aged 0-12 months

### Safe for breastfeeding

A bottle for serving expressed breast milk safe for a breastfed baby as it does not impede its suckling reflex. Designed with the participation of medical professionals and clinically tested. Provided with a professional Dynamic Teat® made of heterogeneous silicone layers (a thin, dynamic, extending tip and a hard, profiled base). This requires active suckling by the baby: extensive use of the muscles of its lips and tongue. Compatible with LOVI breast pumps. Equipped with a teat with the **SUPER vent** air-release system. Withstands repeated boiling.

### Set includes:

- ✓ 150 ml / 250 ml / 330 ml polypropylene bottle (BPA 0%)
- ✓ LOVI **SUPER vent** Dynamic Teat®
- 0 m+ in 150 ml bottle
- 3 m+ in 250 ml bottle
- 9 m+ in 330 ml bottle
- ✓ flexible sealing disc
- ✓ twist top
- ✓ feeding cup

REMEMBER: LOVI brand recommends breastfeeding as the healthiest method of feeding. It recommends to start using an alternative feeding method only after consulting your medical practitioner, midwife or pharmacist, when breastfeeding is impossible or insufficient.

96% of MEDICAL  
PRACTITIONERS

confirmed that the co-ordination of  
suckling, swallowing and breathing  
was not adversely affected\*

97% of MEDICAL  
PRACTITIONERS

confirmed proper, active work of the  
muscles of lips and tongue\*



#### Dynamic tip of the teat

Made of a thin layer of silicone. The tip of the teat expands and contracts with the baby's suckling rhythm, stimulating the muscles of the mouth so they are active. The baby has to work for food.



#### Feeding cup

It has a scale and a special rim to safely serve milk and drugs to newborns and infants.



#### Profiled shape of the bottle

It makes it easy to properly hold the bottle and serve the food in a safe position.



# Safe for breastfeeding

Stardust Bottle with Dynamic Teat®

cat. no.

teat 0 m+  
120 ml – 21/587

teat 3 m+  
240 ml – 21/585



## RESULTS OF A CLINICAL TRIAL OF THE LOVI BOTTLE\*



A sample survey conducted among medical practitioners, nurses, midwives and parents has confirmed that using the LOVI feeding bottle is safe for breastfeeding, letting the baby preserve their suckling rhythm, the correct coordination of suckling, swallowing and breathing, the active use of lips and tongue muscles, and suckling efficiency.

\* confirmed through a product usability survey conducted under clinical conditions in 2007 in Poland, using a specialized questionnaire, on a group of 607 infants, involving medical practitioners, midwives and parents

### A unique stellar collection

Bottle for feeding babies with mother's expressed milk. The dark color of the bottle stands out on the market and at the same time allows you to control the amount of milk. Decorated with gold particles, emphasizing the uniqueness of the Stardust collection. Equipped with a unique Dynamic Feeding Teat® with thin, protruding ending, a hard, profiled base and SUPERvent air outflow system.

### Set includes:

- ✓ 120 ml / 240 ml polypropylene bottle (BPA 0%)
- ✓ LOVI Dynamic Teat® SUPERvent
- 0 m+ in 120 ml bottle
- 3 m+ in 240 ml bottle
- ✓ flexible sealing disc
- ✓ twist top
- ✓ feeding cup

REMEMBER: LOVI brand recommends breastfeeding as the healthiest method of feeding. It recommends to start using an alternative feeding method only after consulting your medical practitioner, midwife or pharmacist, when breastfeeding is impossible or insufficient.



89% of MEDICAL  
PRACTITIONERS

did not observe any difficulties  
in combining breastfeeding with bottle  
feeding using LOVI Dynamic teat<sup>4</sup>®\*

96% of MEDICAL  
PRACTITIONERS

confirmed that the co-ordination of  
suckling, swallowing and breathing was  
not adversely affected\*



#### Dynamic tip of the teat

Made of a thin layer of silicone. The tip of the teat expands and contracts with the baby's suckling rhythm, stimulating the muscles of the mouth so they are active. The baby has to work for food.



#### Venting system

It reduces the risk of colic. The venting valve prevents the teat from getting drawn in and collapsing, thus reducing the risk of colic.



#### Unique design

A bottle in a unique navy blue color, decorated with golden stars. Possibility to choose soothers from the same collection



# Safe for breastfeeding

cat. no.

## Trends Bottle with Dynamic Teat®

0 m+ teat  
120 ml

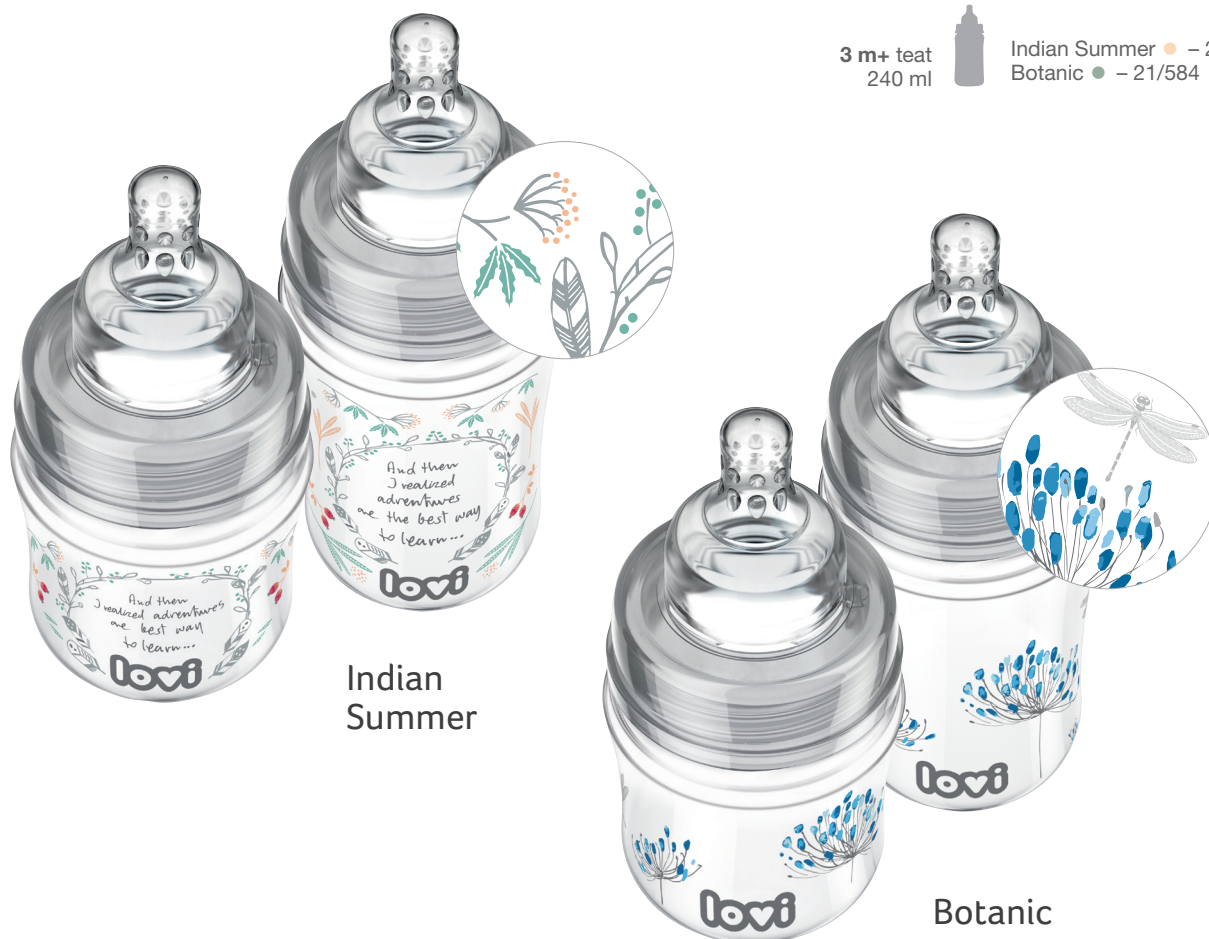


Indian Summer ● – 21/582  
Botanic ● – 21/586

3 m+ teat  
240 ml



Indian Summer ● – 21/580  
Botanic ● – 21/584



Indian  
Summer

Botanic

### Safe for breastfeeding

Bottle for feeding a mother's expressed milk. The bottle is decorated with stylish patterns, following the latest trends. It is available in two fashionable collections.

Safe for a breastfed baby as it does not impede the suckling reflex and does not interfere with breastfeeding. Provided with professional Dynamic Teat® made of heterogeneous

silicone layers (a thin, dynamic, extending tip and a hard, profiled base). This requires active suckling by the baby: extensive use of the muscles of its lips and tongue. The teat is equipped with the **SUPER vent** air-release system, preventing it from getting drawn in and collapsing. The bottle is compatible with LOVI breast pumps.

### Set includes:

- ✓ 120 ml / 240 ml polypropylene bottle (BPA 0%)
- ✓ LOVI **SUPER vent** Dynamic Teat®
- 0 m+ in 120 ml bottle
- 3 m+ in 240 ml bottle
- ✓ flexible sealing disc
- ✓ twist top
- ✓ feeding cup

REMEMBER: LOVI brand recommends breastfeeding as the healthiest method of feeding. It recommends to start using an alternative feeding method only after consulting your medical practitioner, midwife or pharmacist, when breastfeeding is impossible or insufficient.



89% of MEDICAL  
PRACTITIONERS

did not observe any difficulties  
in combining breastfeeding with bottle  
feeding using LOVI Dynamic teat<sup>4@\*</sup>

96% of MEDICAL  
PRACTITIONERS

confirmed that the co-ordination of  
suckling, swallowing and breathing was  
not adversely affected\*



#### Dynamic tip of the teat

Made of a thin layer of silicone. Actively works to stimulate the muscles of the mouth so they are active. The baby has to work for food.



#### Venting system **SUPER vent**

It reduces the risk of colic. The venting valve prevents the teat from getting drawn in and collapsing, thus reducing the risk of colic.



#### Modern and fashionable design

Bottle decorated following the recent trends. Other accessories for feeding and soothing can be selected in matching collections.

\*a product usability survey conducted under clinical conditions in 2007 in Poland, using a specialised questionnaire, on a group of 607 infants aged 0-12 months, involving medical practitioners, nurses, midwives and parents (in Polish hospitals and paediatric clinics)



# Safe for breastfeeding

## Self-Sterilising Bottle for steaming in microwave

cat. no.

0 m+ teat  
150 ml



– 21/572

3 m+ teat  
250 ml



– 21/570

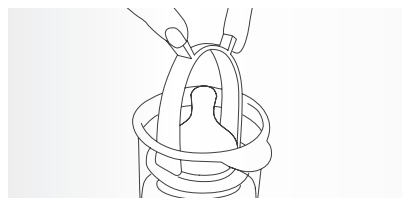
### Fast and easy sterilisation

Innovative Self-Sterilising LOVI Bottle does not require boiling in water or using steam sterilisers.

When properly assembled, the bottle self-sterilises.

### Set includes:

- ✓ 150 / 250 ml bottle (BPA 0%)
- ✓ Dynamic Teat® **SUPER vent** (0m+ in 150 ml bottle, 3m+ in 250 ml bottle)
- ✓ flexible sealing disc
- ✓ twist top
- ✓ hood for steaming in a microwave oven
- ✓ tongs
- ✓ feeding cup



### Hood and tongs for steaming

Allows you to steam all parts of the bottle in a microwave oven in just 90 seconds

### Step 1.

Pour 30 ml of water in the hood and place all the parts in it.

### Step 2.

Put the bottle upside-down in the hood, and place in the microwave oven. After a moment the bottle is ready.







# Nature-friendly bottle

## Diamond Glass Bottle

cat. no.

0 m+ teat  
150 ml



Baby Shower ● – 74/104boy  
Baby Shower ● – 74/104girl  
Botanic ● – 74/105

3 m+ teat  
250 ml



Baby Shower ● – 74/204boy  
Baby Shower ● – 74/204girl  
Botanic ● – 74/205



Baby  
Shower

Botanic



### RESULTS OF A CLINICAL TRIAL OF THE LOVI BOTTLE\*



The clinical trial of the LOVI bottle equipped with the Dynamic Teat®, conducted on a group of 607 infants aged 0-12 months, has confirmed the product's unique features: the preserved sucking rhythm, the correct coordination of sucking, swallowing and breathing, the active use of lips and tongue muscles, and sucking efficiency.

\*\*confirmed through a product usability survey conducted under clinical conditions in 2007 in Poland, using a specialized questionnaire, on a group of 607 infants, involving medical practitioners, midwives and parents

### Nature friendly, safe for breastfeeding

The bottle is made of high quality natural material: borosilicate glass (BPA 0%). It will meet the most stringent needs, being extremely durable and resistant to scratching, ensuring a high level of hygiene and keeping the feed warm for long. The innovative glass is resistant to freezing and boiling temperatures, and is renewable. The Dynamic Teat® preserves the suckling reflex and does not discourage the baby from breast suckling. The bottle has a readable scale and permanent print. Compatible with LOVI breast pumps.

### Set includes:

- ✓ 150 ml and 250 ml glass bottle (BPA 0%)
- ✓ LOVI Dynamic Teat® **SUPER vent** (0 m+ in 150 ml bottle and 3 m+ in 250 ml bottle)
- ✓ flexible sealing disk
- ✓ twist top ✓ feeding cup

REMEMBER: LOVI brand recommends breastfeeding as the healthiest method of feeding. It recommends to start using an alternative feeding method only after consulting your medical practitioner, midwife or pharmacist, when breastfeeding is impossible or insufficient.



89% of MEDICAL  
PRACTITIONERS

did not observe any difficulties  
in combining breastfeeding with bottle  
feeding using LOVI bottle\*

88% of MEDICAL  
PRACTITIONERS

the suckling rhythm of the breastfed  
baby is maintained\*



**Natural and ecological material (BPA 0%)**

Feed temperature remains unchanged for a longer period thanks to the durable and light borosilicate glass. This material is also easy to clean and resistant to freezing and boiling temperatures.



**Dynamic tip of the teat**

Made of a thin layer of silicone. The tip of the teat expands and contracts with the baby's suckling rhythm, stimulating the muscles of the mouth so they are active. The child has to work to obtain the milk from the teat.



**Venting system **SUPER vent****

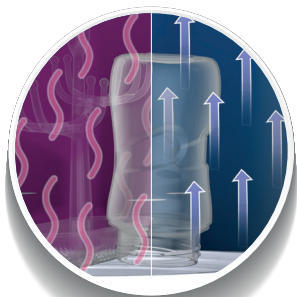
Reduces the risk of colic. The venting valve prevents the teat from getting drawn in and collapsing, thus reducing the risk of colic.



# Convenient and quick sterilization with drying

cat. no. 12/209

## Electric Steriliser with Dryer



Sterilization and drying even in **20 minutes**

### Convenient and quick sterilization with drying

LOVI Sterilizer with Dryer means convenience and quickness.

Up to 3 programs in one device, thanks to which bottles and accessories are sterilised, dry and safe to be used again in 20 minutes.

#### 3 programs:

1. Sterilization Program – natural steam sterilisation – in 10 minutes after switching on
2. Drying Program – possibility of drying in selected time: 10, 30 or 50 minutes
3. Auto Program – automatic sterilisation and drying in 1 hour (10 minutes of sterilisation and 50 minutes of drying)

#### Set includes:

- ✓ Electric Sterilizer with Dryer
- ✓ Accessories tray



#### Unique drying function

Ensures maximum hygiene and saves time.



#### Quick

Sterilisation and drying even in 20 minutes. Just turn on Sterilize program, which lasts 10 minutes and then the shortest Drying program, which also lasts 10 minutes.



#### Convenient

Up to 3 programs in one device: Sterilization, Drying, Auto

REMEMBER: LOVI brand recommends breastfeeding as the healthiest method of feeding.

It recommends to start using an alternative feeding method only after consulting your medical practitioner, midwife or pharmacist, when breastfeeding is impossible or insufficient.





99,9%

#### Safe

Natural steam sterilisation eliminates up to 99,9% bacteria and ensures maximum hygiene.



#### Automatic turn off

After the process is completed, the sterilizer will turn off automatically, which increases the safety of using the device.



#### Spacious

Sterilization and drying 4 bottles and 10 accessories like soothers. Accessories tray is easy to remove, which increases the capacity of sterilizer even to 6-8 bottles.



# Fast and intuitive milk preparation

## Bottle Warmer

cat. no.

○ 77/051\_whi  
● 77/051\_grey



**must  
have**  
SELECTED BY LODZ DESIGN FESTIVAL 2019

Award in one of the biggest designer contests in Poland.

### LOVI Bottle Warmer

For preparing milk for your baby quickly and intuitively, at the optimal temperature.

#### Set includes:

✓ bottle warmer ✓ measuring cup

Bottle not included.

It combines 4 functions:

1. Heats up the feed quickly and evenly.
2. Maintains the temperature for up to 10 hours.
3. Gradually defrosts the feed.
4. Steam disinfects the bottles and bottle accessories.



Temperature of liquids maintained for up to 10 hours, and defrosting function



Fast heating of feed and steam sterilisation of bottles



Feed temperature maintained for up to 3 hours



Prevention of overheating

REMEMBER: LOVI brand recommends breastfeeding as the healthiest method of feeding. It recommends to start using an alternative feeding method only after consulting your medical practitioner, midwife or pharmacist, when breastfeeding is impossible or insufficient.





#### Fast

Heats up milk in 2 minutes (80 ml of milk/water at an initial temperature of 21°C).



#### Intuitive

Thanks to three modes (bottle, HOT, dinner) and an easy to read electronic touchscreen.



#### Universal

Fits most types of bottles and baby food jars.





love  
lives  
here







# Learning how to drink and eat

Is your baby a few months old and have you started to expand his diet and teach him how to drink? Take advantage of our cups offer for each stage of learning how to drink independently. Start with first cup, the perfect one to start with, then choose a non-spill cup which allows children to drink independently but control the flow of liquid.

For an older child you can choose our innovative 360 cup without a spout, which teaches the child the adult way of drinking, but without any spills. A cup with straw with a comfortable handle will be great for further exploring the world.



The path of learning how to drink

## Give your child independence

# 6m+

### First Cup I'm starting!

Very soft  
spout  
– for an easy  
start



For children who start  
learning to drink from  
a cup after a bottle

### Easy Switch



# 6m+

### Non – spill cup I drink without spilling

Non – spill spout  
– zero drops



For children who have  
overcome the first steps  
in learning to drink and they  
become masters in  
drinking from a cup with spout

### Sippy Master



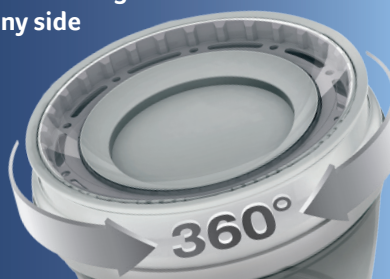
CUPS WITH SPOUT



# 9m+

## 360° Cup Glass-like drinking

No-splash drinking  
- from any side



For children – masters, ready to drink on their own like from a glass, but without fear of spilling

### Drink Master



"OPEN" CUPS

# 11m+

## Cup with straw I drink from a straw

Soft straw  
- for an active child



For children just before their first birthday, ready for a whole new style of drinking

### Freestyle



CUPS WITH STRAW



# I'm starting to learn to drink

## First Cup Easy Switch

Available capacities:

6 m+  150 ml

**6m+**

**Very soft spout  
– for an easy  
start**



*Spare spouts  
available!*

### I'm starting to learn to drink

First Cup Easy Switch is the perfect cup to start learning how to drink independently after 6 months of age. It allows baby to quickly and easily switch from drinking a bottle to a cup.

It has an extremely soft spout, profiled like a teaspoon making learning to drink even easier. It is handy and light and the profiled handles perfectly fit to the tiny hands of a child.

### Set includes:

- ✓ Cup container with scale
- ✓ Contoured spout 6m+
- ✓ Handles ✓ Screw cap



#### Profiled spout

The spout is profiled like a teaspoon, perfect to start learning to drink



#### Profiled handles

adjusted to tiny child's hands



#### Spill cup

water can drip from it freely, that is why the child does not have to put a lot of effort into learning new skills.





Buddy Bear

6 m+ 150 ml ● 35/350



Indian Summer

6 m+ 150 ml ● 35/352





# I drink without spilling

## Non-spill Cup Sippy Master

6m+

Non-spill spout  
– zero drops



Available capacities:

6 m+  210 ml

6 m+  250 ml



non-spill cup



*Spare spouts  
available!*

### A non-spill cup is great choice

for children who have overcome the first steps in learning to drink and they slowly become masters in drinking from a cup with spout. Soft spout is more challenging and forces child to effort and improvement of new skills. Profiled handles

are stronger and perfect for more confident child. The cap protects the spout from getting dirty, which will work both at home and on a walks. The lid fits the base of the LOVI 360°cup.

### Set includes:

- ✓ soft silicone spout
- ✓ screw cap
- ✓ handles
- ✓ container
- ✓ cap



### Soft and silicone spout

The high-quality silicone material is delicate and chemically inert.



### Ergonomic

Spout has an ergonomic shape and length that places it away from the child's teeth area.



### Easy to wash

All parts of the cup can be easily disassembled for washing. The spout is sterilisable.





250 ml

## Buddy Bear

6 m+ 210 ml ● 35/349  
250 ml ● 35/344

## Indian Summer

6 m+ 210 ml ● 35/345girl  
250 ml ● 35/346girl

6 m+ 210 ml ● 35/345boy  
250 ml ● 35/346boy



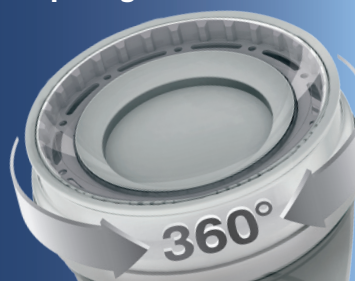


# Glass-like drinking, but without spilling

## 360° Cup Drink Master

9m+

Drinking on all sides  
– no spilling



Available capacities:

9 m+  210 ml

9 m+  250 ml



*Seal available  
for purchase!*



### Learning the adult way of drinking

360 cup perfect for children ready to drink on their own. Facilitates the transition from sucking liquid from non-spill cups to drinking from a glass. Thanks to innovative venting, it allows sucking the liquid from all

around the rim. It accustoms child to the natural, adult way of drinking (like drinking from a glass) but without spilling. The handles are strong specially contoured for a child in constant motion.

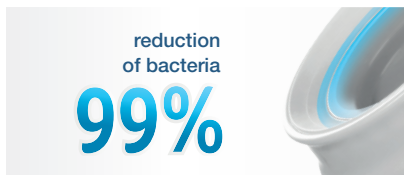
### Set includes:

- ✓ cap, ✓ three-piece twist, ✓ base,
- ✓ handles



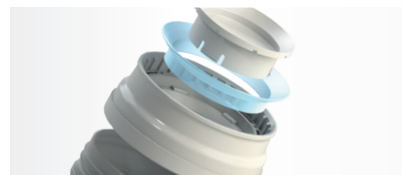
### Innovative sealing system

Enables drinking without spilling but it is designed deliberately not to be a non-spill cup so that when shaken vigorously or dropped, droplets of liquid can come out. It teaches the child to control its movements and prepares them to drink from an open cup.



### Antibacterial protection

Thanks to natural, antibacterial protection bacteria are reduced up to 99.9%.



### Easy to clean

All cup elements can be easily removed and cleaned. A simple structure makes it possible to effectively penetrate all cup areas in order to remove soiling and deposits left by liquids other than water.











## I love

9 m+ 250 ml ● 1/607new

Available in the 3rd quarter 2021



picture at the back



## Wild Soul

9 m+ 250 ml ● 1/604new ● 1/605new

Available in the 3rd quarter 2021



picture at the back



picture at the back

## Buddy Bear

9 m+ 210 ml ● 1/600new  
250 ml ● 1/599new



picture at the back





# Indian Summer

9 m+    210 ml    ● 1/585new    ● 1/586new  
          250 ml    ● 1/591new    ● 1/592new







## Accessories



Silicone Spout  
for First Cup  
Easy Switch

cat. no.  
56/604  
1 pc



Non-spill Cup  
Silicone Spout

cat. no.  
59/870  
1 pc



360° Cup Gasket

cat. no.  
1/618  
2 pcs



Spout/Straw  
for My Cup with Straw

cat. no.  
74/000  
1 pc



# I drink from a straw

## Cup with Straw Freestyle

11m+

Soft straw –  
for an active  
child



Available capacities:

11 m+



250 ml

11 m+



350 ml

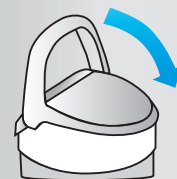


Click&Go!

Open



Closed



### Learning the independence.

Specially designed to allow the child to drink freely. The straw is made of high-quality silicone. Its length is adjusted so that the liquid stays outside the child's teeth area.

The cup has a cap with a comfortable handle, which allows easy closing and opening also for a child. Characteristic click is a sign that the cup is well closed and can be safely held by the child.

An additional protection against accidental spilling of the drink is the

Safe Lock button. My Cup with a Straw Click & Go allows the child to take a sip, close the cup and move forward for further exploration of the world.

### Set includes:

- ✓ body for liquid ✓ screw cap
- ✓ spout with straw



### Delicate straw

Made of soft, high-quality silicone that does not irritate the gums and is chemically inert.



### Convenient handle

It allows easy opening and closing, also by a child. The closure is strong enough to allow the child to hold the cup securely even while moving.



### Safety Lock

A specially designed button protects against accidental opening and spilling of a drink.







## Salt & Pepper



picture at the back



11 m+ 250 ml 35/356  
350 ml 35/357

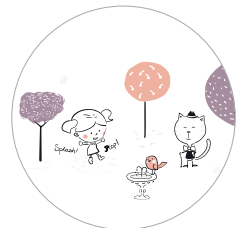
## Lovely



picture at the back



11 m+ 250 ml 35/354boy 35/354girl  
350 ml 35/355boy 35/355girl



picture at the back















# Soothing

Suckling is fundamental to the development of the child from the moment of its birth. It allows it to control its craving, the quantity of feed eaten, as well as helps to soothe its emotions and feelings of safety. The strong need of suckling is partially satisfied by a soother. Its selection should be well thought out. Its shape and structure should enable breathing and swallowing of saliva, without impeding the natural suckling reflex.

Aleksandra Łada, MD



# Does not impede the suckling reflex

Dynamic Soother®



Available in the following sizes:

mini shield



0-2 m



standard shield



0-3 m



3-6 m



6-18 m



strengthened nipple



18 m+



## RESULTS OF A CLINICAL TRIAL OF LOVI SOOTHERS\*



A product usability survey under clinical conditions\* confirmed the unique features of the LOVI Dynamic Soother®:

- does not impede the suckling reflex
- prevents the teat chewing reflex
- enables easy breathing and swallowing of saliva
- does not impede proper speech and orthodontic development

### Does not impede the suckling reflex, or proper speech and orthodontic development

Designed by speech and language therapists with a view to protecting the suckling reflex. It has a symmetrical shape that is similar to that of a breast nipple. It has a unique dynamic structure made of heterogeneous silicone that enables the natural suckling rhythm.



#### Dynamic nipple

Made of heterogeneous silicone, which allows it to expand and contract with the baby's suckling rhythm. The nipple's symmetrical shape is similar to that of a breast nipple.



#### Profiled mouth shield

Its profiled shape allows the child to freely breathe through its nose. The safe material from which it is made does not contain any Bisphenol A.



#### Openings in mouth shields

Allows free circulation of air and prevents irritation of the baby's soft skin.

### Set includes:

✓ soother 2 pcs ✓ soother cover 2 pcs ✓ container for hygienic storage of soother

\*) a product usability survey conducted under clinical conditions on a group of 150 infants aged 0-18 in specialised, regional paediatric and neurological clinics in Poland, operating under the National Health Fund in Katowice, Rzeszów and Bydgoszcz, involving midwives and parents.





90% of PARENTS  
and MIDWIVES

would recommend  
LOVI Dynamic Soother®  
to other parents

“The shape and structure of the soother should enable breathing and swallowing of saliva and not impede the suckling reflex.”

Aleksandra Łada, MD  
Speech and Language  
Therapist



# Soother with smaller shield

Dynamic miniSOOTHER

0-2 m



The smallest of our soothers!

## Recommended for newborns

In contrast to standard soothers, the LOVI miniSOOTHER has a smaller and lighter shield. It better adapts to the tiny mouth of a newborn.



### Smaller shield

Recommended for the youngest babies, aged 0-2 months. Nipple the same as in 0-3 m soothers.



### Extra light

Smaller shield means lighter product, better for newborns.

## Set includes:

- ✓ soother 2 pcs
- ✓ soother cover
- 2 items
- ✓ container for hygienic storage of soother

## My Little Love



**A luminous clip**  
makes it easy to find the soother when it is dark

cat. no.  
0-2 m+

- 2 pcs – 22/847boy
- 2 pcs – 22/847girl



## Buddy Bear



**A luminous clip**  
makes it easy to find the soother when it is dark

cat. no.  
0-2 m+

2 pcs – 22/862







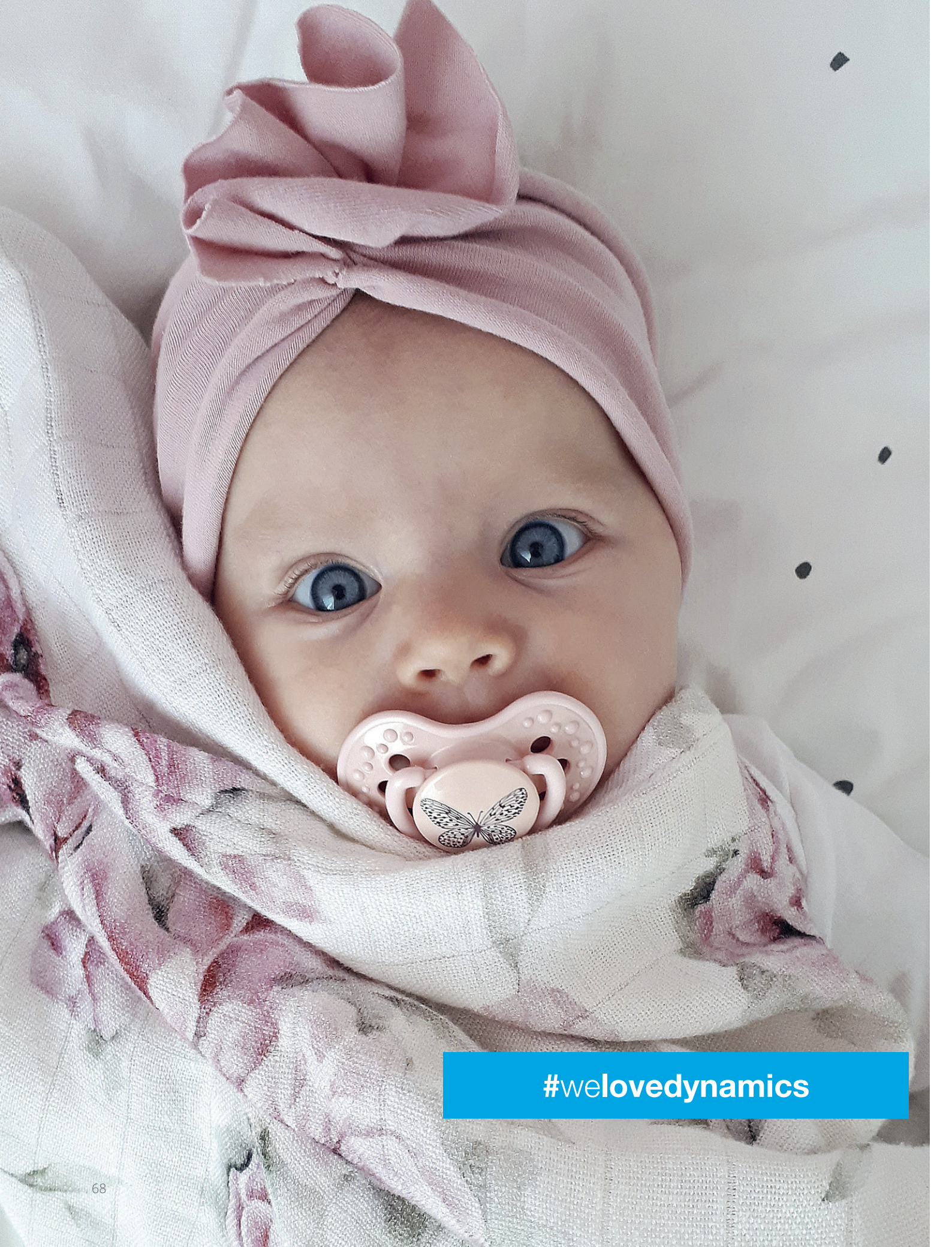
## Wild Soul

cat. no.  
0-2 m+

- 2 pcs – 22/881 boy
- 2 pcs – 22/881 girl







**#welovedynamics**



# Soother with standard shield

Dynamic Soother®

0-18 m

## Wild Soul

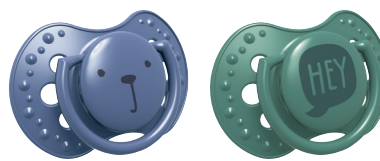


0-3 m+ 22/882boy  
3-6 m+ 22/883boy  
6-18 m+ 22/884boy



0-3 m+ 22/882girl  
3-6 m+ 22/883girl  
6-18 m+ 22/884girl

## Hey

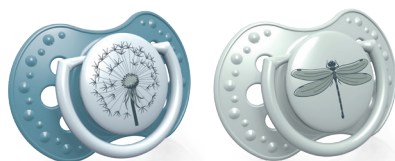


0-3 m+ 22/885boy  
3-6 m+ 22/886boy  
6-18 m+ 22/887boy

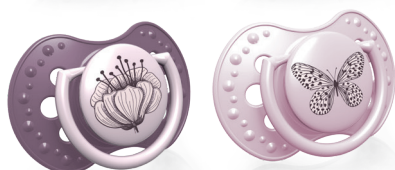


0-3 m+ 22/885girl  
3-6 m+ 22/886girl  
6-18 m+ 22/887girl

## Botanic



0-3 m+ 22/869boy  
3-6 m+ 22/870boy  
6-18 m+ 22/871boy



0-3 m+ 22/869girl  
3-6 m+ 22/870girl  
6-18 m+ 22/871girl

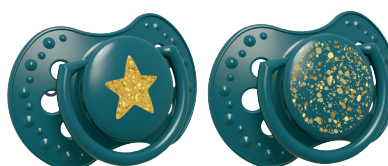
## Stardust



0-3 m+ 22/892\_blue  
3-6 m+ 22/893\_blue  
6-18 m+ 22/894\_blue



0-3 m+ 22/892\_violet  
3-6 m+ 22/893\_violet  
6-18 m+ 22/894\_violet



0-3 m+ 22/892\_green  
3-6 m+ 22/893\_green  
6-18 m+ 22/894\_green

## Salt & Pepper



0-3 m+ 22/877  
3-6 m+ 22/878  
6-18 m+ 22/879

## Buddy Bear



A luminous clip  
makes it easy to find the soother  
when it is dark

## I love



0-3 m+ 22/866  
3-6 m+ 22/867  
6-18 m+ 22/868



0-3 m+ 22/863  
3-6 m+ 22/864  
6-18 m+ 22/865



# Soother with standard shield

Dynamic Soother®

0-18 m

## Indian Summer



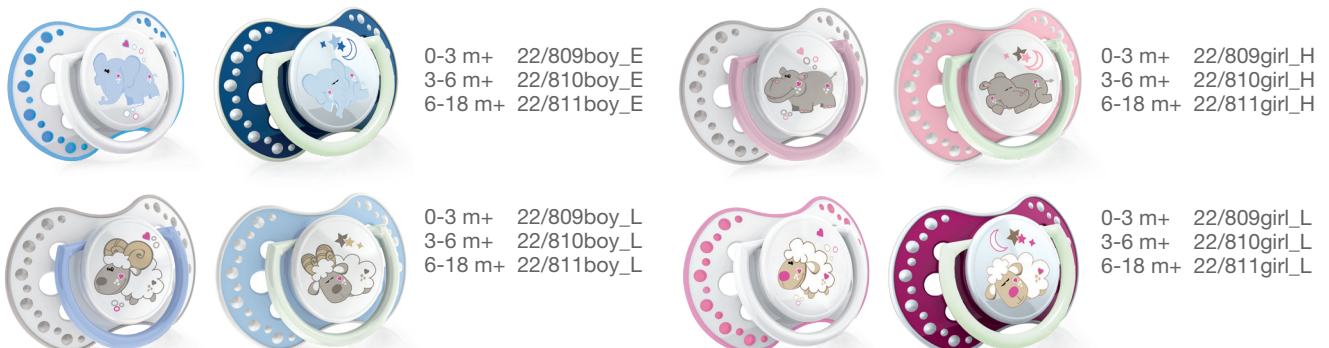
## Folky



## Night & Day



**A luminous clip**  
makes it easy to find the soother  
when it is dark



## Pride & Joy



**A luminous clip**  
makes it easy to find the soother  
when it is dark



Match with soother  
clip with ribbon



p. 74







# Soother for older children

Dynamic Soother® 18 m+

18 m+



*Strengthened  
nipple more  
resistant to  
biting*

## Designed for older children

It retains all the properties of soothers for younger children, such as dynamism or a symmetrical shape resembling of mother's breast nipple. The silicone nipple of the soother is strengthened, making it resistant to biting. This is especially important during periods of intensive development of teeth and gums.

## Set includes:

✓ soother 2 pcs ✓ soother cover  
2 items ✓ container for hygienic  
storage of soother

## Botanic

18 m+ ● 2 pcs – 22/875boy  
● 2 pcs – 22/875girl



## Indian Summer

18 m+ ● 2 pcs – 22/876boy  
● 2 pcs – 22/876girl



## Salt & Pepper

18 m+ 2 pcs – 22/880



## Stardust

Available in the 3rd quarter 2021

18 m+ ● 2 pcs – 22/895\_blue  
● 2 pcs – 22/895\_violet  
● 2 pcs – 22/895\_green









# Stylish and practical

## Soother Clips with Ribbon

### Stylish and practical

A soother clip with ribbon is an interesting and stylish accessory to a child's soother and clothes. It is a great convenience for parents and a modern design consistent with the collection of our soothers.

Irreplaceable during walks and travels - it is a guarantee that the soother will not get lost and fall on the floor, and thanks to the soother clip with ribbon soother will be always at hand.



### Wild Soul

51/027



### I love

51/021



### Baby Shower

51/020boy



51/020girl



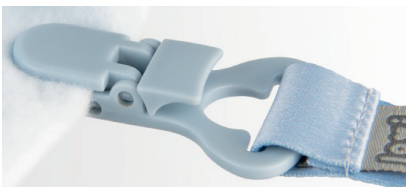
### Salt & Pepper

51/024



### Hey

51/028



### Practical

Soothes is always at hand, it can be strapped to clothes, blanket or stroller.



### Comfortable clasp

Easy and quick fastening to the soother



### Solid clip

Keeps clothes well and will not damage the material





#### Universal

Match to every soother with a handle but also for some teethingers or toys.



#### Safe and durable

High quality of materials, suitable for children



#### 80% recycled packaging

For the sake of planet, 80% of the plastic in the packaging is recycled.



# Convenient and hygienic storage

## Soother Container



- 13/111\_min
- 13/111\_bei
- 13/111\_ros

### Convenient and hygienic storage

Enables convenient and hygienic storage of the soother while out on a walk or travelling. Protects the soother against becoming soiled or lost. Hygienic and easy to steam sterilize, it helps to keep the soother clean while out on a walk or travelling.



#### Two clips

The container can be quickly and easily attached to a pram or a car seat, as well as to a belt or trousers.



# Safety and hygiene

## Soother Holder

### Safety and hygiene

The holder is equipped with a practical clip which makes it possible to conveniently and reliably fix the soother to baby's clothing, protecting it against becoming soiled or lost once the baby becomes more active.



#### A stable clip

A practical and stable mechanism protects the holder against detaching from the baby's clothing.



#### Convenient fastener

The holder can be easily attached, even with one hand, thanks to a simple clip.



#### Shape

Rounded shapes eliminate the risk of scratches or cuts.



## Buddy Bear

cat. no. 10/887



## Night & Day

cat. no. 10/880



## Follow the Rabbit

cat. no. 10/884



## Diamond

cat. no. 10/882



## Indian Summer

cat. no. 10/883



cat. no. 10/886



Match with  
soothers

p. 71









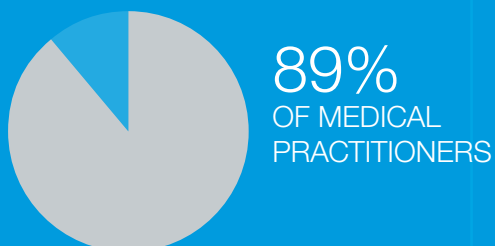
# Results of clinical trials

conducted under clinical  
conditions

Our advanced technologies are developed based on the requirements laid down by the specialists working closely with the LOVI brand. Selected LOVI products are tested in sample survey. We carry them out in hospitals and specialist clinics in conjunction with medical practitioners, midwives and parents, and involve large groups of infants.



# LOVI bottle with Dynamic Teat®



did not observe any difficulties  
in combining breastfeeding with bottle  
feeding using LOVI bottle\*

## RESULTS OF A CLINICAL TRIAL OF THE LOVI BOTTLE WITH DYNAMIC TEAT®

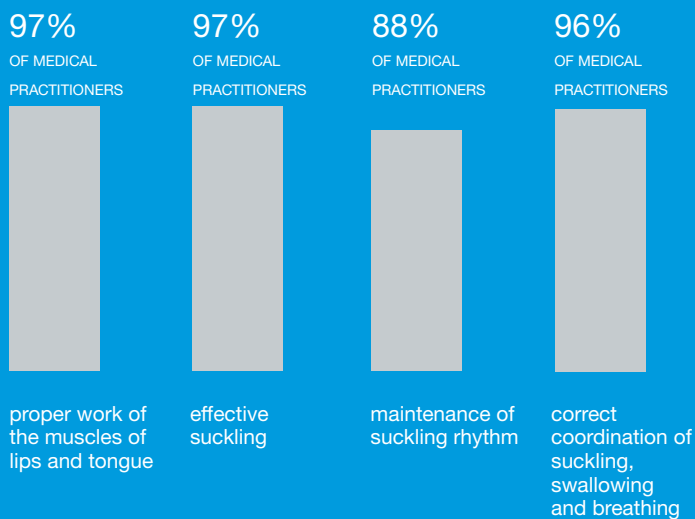


A product usability survey conducted under clinical conditions in 2007, using a specialized questionnaire, on a group of 607 infants aged 0-12 months. Involving medical practitioners, nurses, midwives and parents (in Polish hospitals and paediatric clinics) confirmed the following unique features:

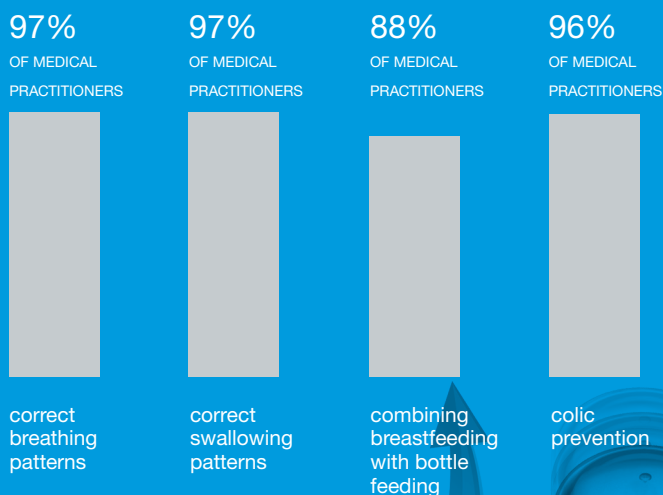
- maintenance of suckling rhythm
- correct coordination of suckling, swallowing and breathing
- active work of muscles of lips and tongue
- effective suckling

Clinical trial results prepared by:  
Aleksandra Lada M.D. PhD, Speech  
and Language Therapist, Specialist in  
Feeding and Communication Development  
Disorders in Young Children / NDT SLT  
Senior Tutor

### Evaluation of the suckling function based on the proper physiological suckling pattern



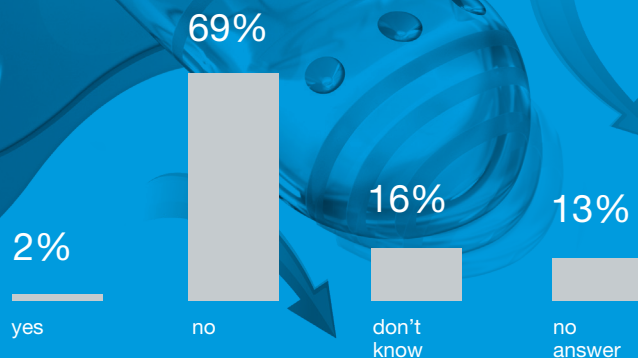
### Evaluation of the physiology of feeding: breathing patterns, swallowing patterns, ease of combining breastfeeding with bottle feeding and colic prevention



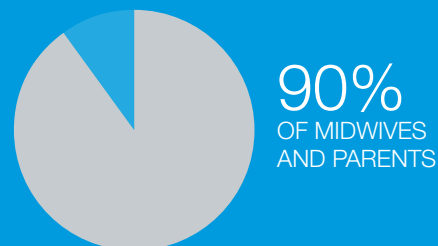
REMEMBER: LOVI brand recommends breastfeeding as the healthiest method of feeding. It recommends to start using an alternative feeding method only after consulting your medical practitioner, midwife or pharmacist, when breastfeeding is impossible or insufficient.



Did you notice any negative changes during breastfeeding after using the LOVI soother?



## LOVI Dynamic Soother®

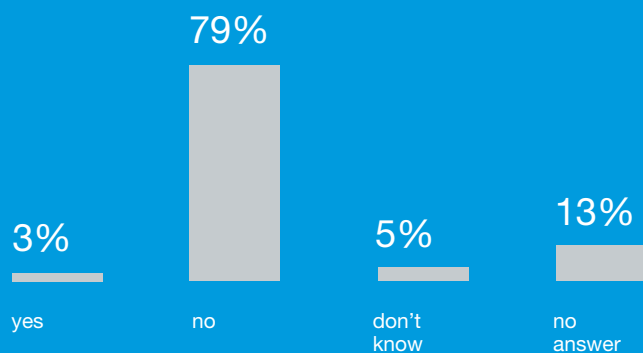


would recommend LOVI Dynamic Soother® to other parents

Does your baby breathe freely through its nose while using the LOVI soother?



Does your baby bite the LOVI soother when using it?



### RESULTS OF A CLINICAL TRIAL OF THE LOVI SOOTHER



A product usability survey conducted under clinical conditions on a group of 150 infants aged 0-18 in specialised, regional paediatric and neurological clinics in Poland, operating under the National Health Fund in Katowice, Rzeszów and Bydgoszcz, involving midwives and parents confirmed the following unique features of LOVI soothers:

- does not disturb the suckling reflex
- prevents the teat chewing reflex
- enables easy breathing and swallowing of saliva
- does not impede proper speech and orthodontic development\*

\* provided that recommendations of the orthodontist and speech and language therapist are followed



Quality management system in compliance with: ISO 9001 and ISO 22716

© All rights reserved. This publication contains legally protected elements. No printed or electronic part of this publication, including images, themes, logos and slogans cannot be used, including duplicating, copying, leasing or distributing in any form or by any means without prior written permission of CANPOL Sp. z o. o.

Trademark LOVI® is legally protected industrial property of CANPOL Sp. z o. o. or its licensors.

